

# TRI MO TRIMOTERM NEXT



UP TO 69% LOWER  
CARBON FOOTPRINT



**THE ONLY WAY IS FORWARD**

**SUSTAINABILITY IS NOT  
JUST A COMPONENT OF OUR  
VALUE CREATION MODEL.  
IT IS OUR VALUE CREATION MODEL.**

# OUR COMMITMENT TO SUSTAINABILITY

OUR AMBITION IS TO LEAD THE INDUSTRY IN CLIMATE ACTION AND FOSTER A MORE EQUITABLE SOCIETY. TRANSPARENCY IN OUR OBJECTIVES AND PERFORMANCE IS FUNDAMENTAL TO EARNING AND MAINTAINING THE TRUST OF OUR STAKEHOLDERS. AS EXPECTATIONS FOR ENVIRONMENTAL, SOCIAL, AND GOVERNANCE (ESG) COMMITMENTS AND HIGH-PERFORMANCE STANDARDS GROW, WE ARE DEDICATED TO MEETING THESE PRIORITIES WITH INTEGRITY AND MEASURABLE RESULTS.

- **HOLISTIC SUSTAINABILITY**
- **PRODUCT AND COMPANY-WIDE INITIATIVES**
- **VALUE CHAIN ASSESSMENT**
- **LIFECYCLE ASSESSMENT (LCA) FOR ACCURATE IMPACT MEASUREMENT**

We are not just imagining a better future – we are actively creating it. Our commitment to a zero-carbon world drives every step of our growth and development. The time to act is not tomorrow or someday – it is now. Progress is not merely an option; it is the only path forward.

# SCIENCE-BASED TARGETS COMMITMENT

OUR LONG-TERM OBJECTIVE IS TO ACHIEVE NET-ZERO GREENHOUSE GAS (GHG) EMISSIONS BY 2050. AS PART OF THIS COMMITMENT, WE HAVE SET AMBITIOUS INTERIM TARGETS FOR 2030, INCLUDING A 90% REDUCTION IN SCOPE 1 AND SCOPE 2 EMISSIONS AND A 25% REDUCTION IN SCOPE 3 EMISSIONS.

## **IN RESPONSE, WE HAVE DEVELOPED TRIMOTERM NEXT –**

an innovative solution specifically designed to support global CO<sub>2</sub> reduction efforts and address climate change. With Trimoterm NEXT, we turn sustainability commitments into tangible, real-world impacts, fulfilling our shared vision for a cleaner, greener future.

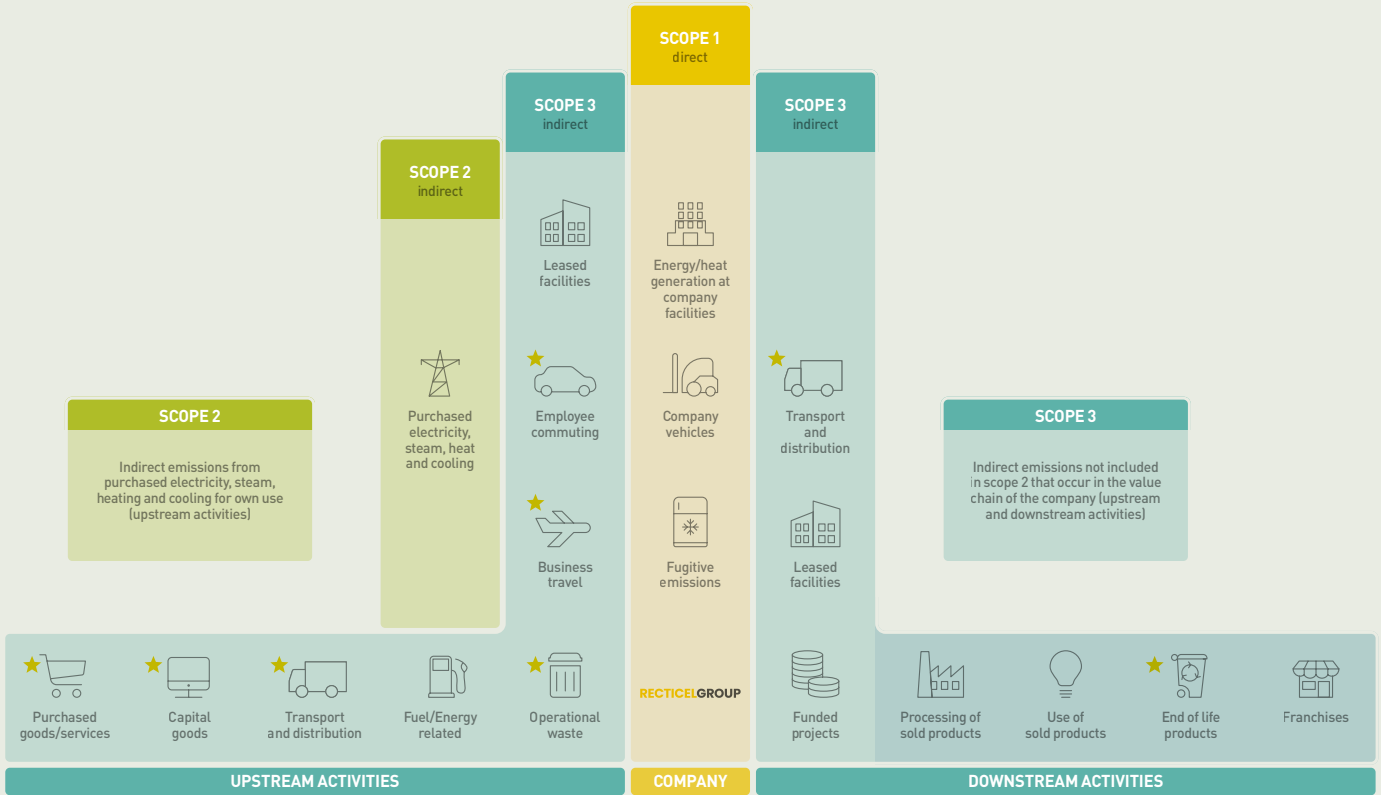
---

ALIGNED WITH RECTICEL'S COMMITMENT TO THE SCIENCE-BASED TARGETS INITIATIVE (SBTI), WITH TARGETS APPROVED IN FEBRUARY 2024, WE ARE DEDICATED TO MAKING MEASURABLE PROGRESS IN SUSTAINABILITY.

# RECTICELGROUP

## SCOPE 1

Direct emissions from owned or controlled resources



★ Scope 3, relevant for Recticel

The timeline marks the following milestones:

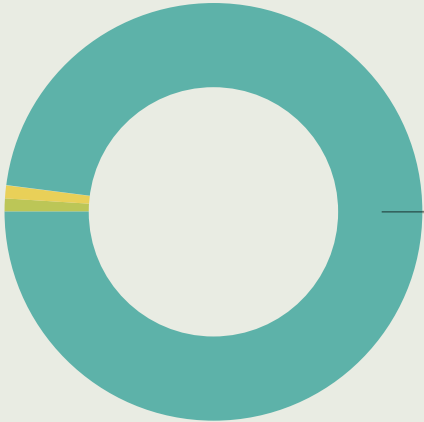
- 2021 Trimo:** Commitment letter signed
- 2022 Recticel:** Commitment letter signed
- 2024 Recticel:** SBTi targets approved in February
- 2030:** -90% Scope 1 and 2, -25% Scope 3
- 2050:** Net-Zero GHG emissions

# REDUCING CO<sub>2</sub> EMISSIONS ACROSS SCOPES

WE MEASURE EMISSIONS IN ACCORDANCE WITH THE GHG PROTOCOL, FOCUSING ON SCOPE 1 (DIRECT EMISSIONS), SCOPE 2 (PURCHASED ELECTRICITY), AND SCOPE 3 (SUPPLY CHAIN AND DOWNSTREAM ACTIVITIES). BY ANALYSING AND CATEGORISING EMISSION SOURCES, WE STRATEGICALLY TARGET AND IMPLEMENT MEASURES TO REDUCE OUR CARBON FOOTPRINT.

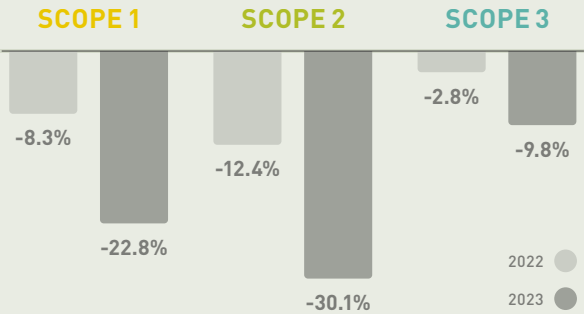
SCOPE 1  
0.67%

SCOPE 2  
0.75%



SCOPE 3  
98.59%

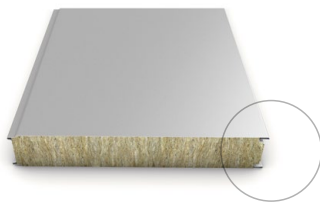
The majority of emissions originate from purchased materials and services. Achieving significant, long-term reductions requires prioritising materials that are sustainably sourced and produced with a lower carbon footprint. By selecting environmentally friendly materials, we can address the primary sources of emissions and advance towards a more sustainable future.





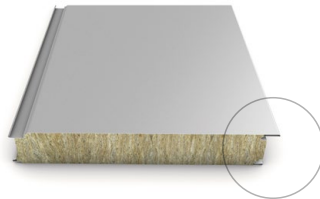
# TRIMOTERM NEXT

WE ARE DEEPLY COMMITTED TO SUSTAINABILITY,  
FOSTERING INNOVATION NOT ONLY IN OUR PRODUCTS  
BUT ALSO ACROSS OUR ENTIRE SUPPLY CHAIN.



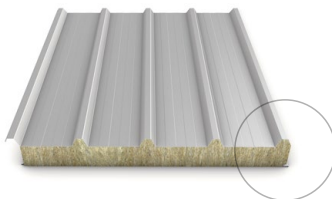
## FTV

façade panel with standard fixing



## FTV HL

façade panel with hidden fixing



## SNV

roof panel

Our latest solution, Trimoterm NEXT, sets a new standard with up to 69% lower carbon footprint compared to existing solutions. This achievement underscores our commitment to enhancing every stage of the product lifecycle, from the use of **SUSTAINABLE AND ENVIRONMENTALLY FRIENDLY** materials to advanced manufacturing processes. We prioritise collaboration with suppliers who share our vision, ensuring responsibly sourced raw materials with minimal environmental impact.

# REDUCED CARBON FOOTPRINT THROUGH SUSTAINABLE BASIC MATERIALS

TRIMOTERM NEXT REPRESENTS A SIGNIFICANT STEP FORWARD IN SUSTAINABLE CONSTRUCTION, MEETING THE GROWING DEMAND FOR ECO-CONSCIOUS SOLUTIONS. THESE ADVANCED PANELS ARE MADE WITH SUSTAINABLE, LOW-CARBON MATERIALS, CAREFULLY CHOSEN TO MINIMISE CO<sub>2</sub> EMISSIONS THROUGHOUT THE ENTIRE VALUE CHAIN. FROM PRODUCTION TO END USE, THEY EXEMPLIFY OUR COMMITMENT TO FOSTERING A MORE ENVIRONMENTALLY RESPONSIBLE LIFECYCLE.

At the core of their innovation lies the use of **SUSTAINABLE MATERIALS**, sourced and manufactured using advanced, eco-friendly methods. By incorporating renewable energy, hydrogen technology, and higher recycled content, these materials substantially reduce the carbon footprint of the components.



### GREEN STEEL

up to

# 73%

### REDUCTION

in CO<sub>2</sub> emissions

### GREEN MINERAL WOOL

up to

# 69%

### REDUCTION

in CO<sub>2</sub> emissions

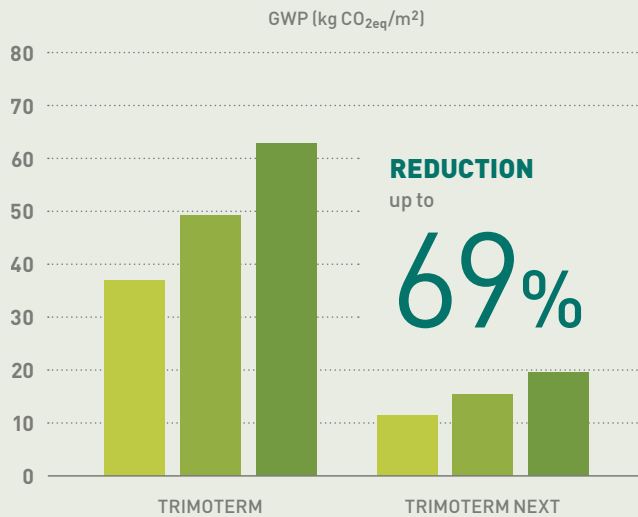
### GREEN MDI (methylene diphenyl diisocyanate)

up to

# 60%

### REDUCTION

in CO<sub>2</sub> emissions



By integrating these innovative materials, Trimoterm NEXT achieves up to a **69% REDUCTION IN CO<sub>2</sub> EQUIVALENT** compared to standard panels, significantly lowering their global warming potential.

- Mineral Wool Core type: Power T, Thickness: 60 mm
- Mineral Wool Core type: Power T, Thickness: 150 mm
- Mineral Wool Core type: Power T, Thickness: 240 mm

WITH TRIMOTERM NEXT, WE ESTABLISH NEW BENCHMARKS FOR SUSTAINABLE BUILDING SOLUTIONS, TRANSFORMING THE VISION OF A ZERO-CARBON FUTURE INTO A REALITY TODAY.

# PRODUCT-LEVEL CARBON FOOTPRINT REDUCTION

TRIMOTERM NEXT IS DESIGNED TO SIGNIFICANTLY  
MINIMISE ENVIRONMENTAL IMPACTS.

RECYCLABLE UP TO

99%

---

OUR PRODUCTS HELP CONSERVE  
NATURAL RESOURCES AND  
REDUCE WASTE.

RECYCLED CONTENT UP TO

45%

Through our collaborative approach to construction, we deliver substantial reductions in carbon emissions. Every product is sustainably sourced and engineered with environmental responsibility at its core, making green building an inherent advantage rather than a choice.

**OUR FOCUS REMAINS ON PROGRESSING TOWARDS A ZERO-CARBON WORLD, ONE PARTNERSHIP AND PROJECT AT A TIME.**



# SUSTAINABLE PACKAGING SOLUTIONS

OUR SUSTAINABLE PACKAGING OPTIONS ARE DESIGNED TO MINIMISE ENVIRONMENTAL IMPACTS AT THE END OF THEIR LIFECYCLE. WE CAN SUPPLY PACKAGING WITH:

50%

RECYCLED EPS

30%

RECYCLED STRETCH FOIL

30%

RECYCLED COVER FOIL

---

THESE INNOVATIONS FURTHER REDUCE THE CARBON FOOTPRINT WHILE ENHANCING THE OVERALL SUSTAINABILITY OF OUR PRODUCTS.



# COMPREHENSIVE SUPPORT FOR CARBON-NEUTRAL BUILDINGS

WE SUPPORT CLIENTS IN ACHIEVING CARBON-NEUTRAL BUILDINGS BY OFFERING GUIDANCE AT EVERY STAGE, FROM SELECTING SUSTAINABLE MATERIALS TO PROVIDING CONSTRUCTION EXPERTISE.

OUR SOLUTIONS ALIGN WITH WIDELY RECOGNIZED GREEN BUILDING CERTIFICATION SYSTEMS LIKE BREEAM, LEED, AND DGNB, ENSURING HIGH ENVIRONMENTAL PERFORMANCE FOR EVERY PROJECT.



Etele Plaza, Hungary  
Awarded the BREEAM 'Very Good' environmental certificate  
Retail Project of the Year at Europa Property CEE Retail Awards  
Best of the Best Retail Development at HOF Awards

Photo rights © Mudri László



# REFERENCES

- 1 Roko hotel PC Špica SLO – photo rights © Miran Kambič
- 2 Logistikcenter til Bestseller DK – photo rights © Adam Mørk
- 3 Brnik Terminal TE 2.2. SLO – photo rights © Miran Kambič
- 4 Meidoorn Office NL – photo rights © DAPH.nl



- 5 Cargo partner SLO – photo rights © Miran Kambič
- 6 Grand Palais Ephémère FR – photo rights © Patrick Tourneboeuf for the GP Rmn
- 7 Sports Hall in Kuřim CZ – photo rights ©BoysPlayNice Photography





- 8 'Le Officine' former Metalmetron area IT – photo rights © Giuseppe Maritati
- 9 KUEHNE + NAGEL Warehouse and Logistic Center Brnik SLO – photo rights © Miran Kambič
- 10 Duna Arena HU – photo rights © Bujnovszky Tamás
- 11 Wasserbaulabor BOKU – River Lab AT – photo rights © BOKU Christoph Gruber



# COMPETITIVE EDGE

## 1

### SIGNIFICANT CARBON FOOTPRINT REDUCTION

Trimoterm NEXT achieves up to a **69% lower carbon footprint**, supporting **Scope 3 emission reduction and contributing to customer and company-wide and national sustainability goals.**

## 2

### COMPLIANCE AND CERTIFICATION BENEFITS

**Fully compliant with legislation on low-carbon buildings** and recognized by sustainability certification systems such as **LEED, DGNB, BREEAM, BREEAM-NL, SBTi**, and others, **offering additional points for assessments.**

## 3

### RECYCLABILITY AND WASTE MINIMIZATION

Trimoterm NEXT features **up to 99% recyclability** and **up to 45% recycled content**, promoting resource conservation and environmental responsibility. Our commitment extends beyond the product itself with sustainable packaging solutions, including **50% recycled EPS, 30% recycled stretch foil, and 30% recycled cover foil.**

## 4

### FINANCIAL INCENTIVES AND BUILDING VALUE

Offers potential **subsidies** (market-dependent) while significantly **increasing the value of buildings.**

# 5

## INNOVATIVE SUSTAINABLE DESIGN

Incorporates advanced materials like **green steel** (up to 73% CO<sub>2</sub> reduction), **green MDI** (up to 60% CO<sub>2</sub> reduction), and **green mineral wool** (up to 69% CO<sub>2</sub> reduction), **aligning with climate change mitigation strategies**.

# 6

## SUPPORT FOR CARBON- NEUTRAL BUILDINGS

Providing guidance throughout the project, helping clients achieve their **carbon goals** with expert advice on sustainable materials and other sustainability related topics.

# 7

## FUTURE-ORIENTED INNOVATIONS

Represents a **forward-thinking approach** to construction, actively transforming the industry toward a sustainable, carbon net-zero future.

# CONCLUSION

WE SEE OURSELVES AS PARTNERS TO OUR CLIENTS, WORKING COLLABORATIVELY TO OVERCOME BARRIERS TO SUSTAINABLE BUILDING. WE INVITE OUR CLIENTS TO JOIN US ON THIS GREEN JOURNEY, CHALLENGING OUTDATED PRACTICES AND REPLACING THEM WITH SUSTAINABLE, FORWARD-THINKING ALTERNATIVES.

OUR ENVIRONMENTALLY CONSCIOUS PRODUCTS ARE DESIGNED TO REDUCE CARBON FOOTPRINT AND AT THE SAME TIME ALSO ENHANCE THE ECOLOGICAL QUALITIES OF COMPLETED BUILDINGS.

**Contact us to learn how Trimoterm NEXT can support your sustainability goals.**

Trimo d.o.o.  
Prijateljjeva cesta 12  
8210 Trebnje, Slovenia  
T +386 (0)7 34 60 200  
F +386 (0)7 34 60 127  
trimo@trimo-group.com  
sustainability@trimo-group.com  
www.trimo-group.com

**BUILDING A SUSTAINABLE FUTURE  
ONE PROJECT AT A TIME**

**TRI  
MO**